



proLAB



LABORATORY  
**DISSOLVERS**

LABORATORY  
**MIXERS**

# Dissolver GREEN

The GREEN laboratory dissolver is an effective device for dispersing, mixing, dissolving and distributing solids in liquids with a recommended capacity of up to 3 liters.

The GREEN model is distinguished by its compact dimensions, allowing it to be placed in the fume hood, and by the motor power of 0.55 kW.



	Power	Width	Depth	Height	Disc spacing	Revolutions
<b>Green</b>	0,55 kW	650 mm	500 mm	1000 mm	30 mm	0-8000 rpm
<b>Green EI</b>	0,55 kW	730 mm	520 mm	1350 mm	30 mm	0-8000 rpm

## Additional equipment:

- electric lift
- vacuum attachment
- rotor stator
- ring mill
- analogue control
- electronic control
- EX-EI version
- EX-EE version



# Dissolver YELLOW

The YELLOW laboratory dissolver is a universal device for dispersing, mixing, dissolving and distributing solids in liquids.

The YELLOW model is distinguished by its compact dimensions and is most frequently chosen by our clients.



	Power	Width	Depth	Height	Disc spacing	Revolutions
Yellow	0,75 kW	930 mm	520 mm	1500 mm* 1700 mm	30 mm	0-9000 rpm

\* - with electric lift

## Additional equipment:

- electric lift
- pneumatic lift
- vacuum attachment
- rotor stator
- basket mill
- ring mill
- analogue control
- electronic control
- EX-EI version
- EX-EE version





## Dissolver

# ORANGE

The ORANGE laboratory dissolver is used for dispersing, mixing, dissolving and distributing solids in liquids.

The ORANGE model, as an alternative to the YELLOW one, is designed for products of higher viscosity.



	Power	Width	Depth	Height	Disc spacing	Revolutions
<b>Orange</b>	1,10 kW	930 mm	520 mm	1500 mm* 1700 mm	30 mm	0-8000 rpm

\* - with electric lift

### Additional equipment:

- electric lift
- pneumatic lift
- vacuum attachment
- rotor stator
- basket mill
- ring mill
- analogue control
- electronic control
- EX-EI version
- EX-EE version



# Dissolver RED

The RED laboratory dissolver is an effective device for dispersing, mixing, dissolving and distributing solids in liquids.

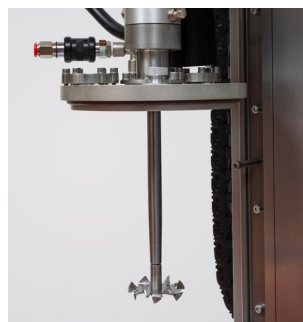
The RED model is intended mainly for larger samples.



	Power	Width	Depth	Height	Disc spacing	Revolutions
Red	1,50 kW	930 mm	520 mm	1700 mm	30 mm	0-7000 rpm
Red El	0,75-1,50 kW	930 mm	520 mm	1750 mm	30 mm	0-7000 rpm

## Additional equipment:

- electric lift
- pneumatic lift
- vacuum attachment
- rotor stator
- basket mill
- ring mill
- analogue control
- electronic control
- EX-EI version
- EX-EE version



## Dissolver BLUE

The BLUE laboratory dissolver is an effective device for dispersing, mixing, dissolving and distributing solids in liquids on a laboratory and semi-technical scale.

The BLUE model is distinguished by a compact design and a power of 2.2 kW.



	Power	Width	Depth	Height	Disc spacing	Revolutions
Blue	2,20 kW	930 mm	550 mm	1850 mm	50 mm	0-5500 rpm
Blue El	2,20 kW	930 mm	550 mm	1900 mm	50 mm	0-5500 rpm

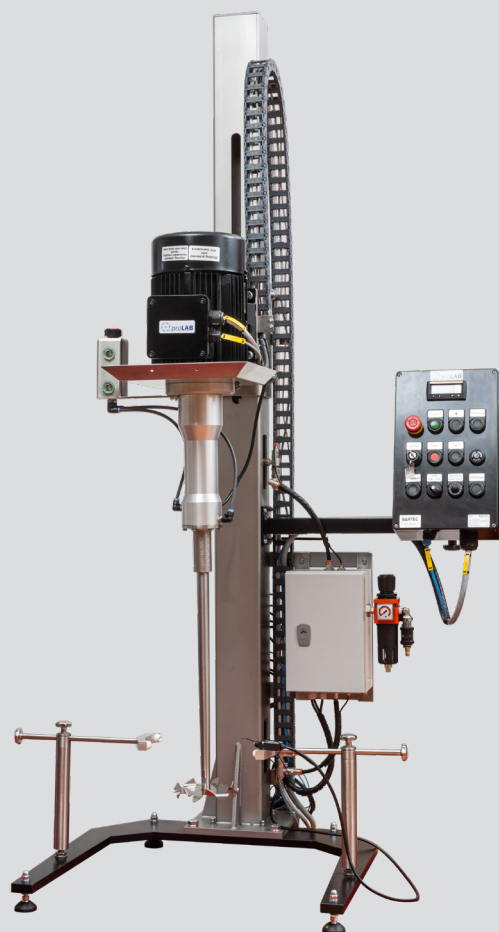
### Additional equipment:

- electric lift
- pneumatic lift
- vacuum attachment
- rotor stator
- basket mill
- ring mill
- analogue control
- electronic control
- EX-EI version
- EX-EE version



# Dissolver BLACK

The BLACK laboratory dissolver is an effective device for dispersing, mixing, dissolving and distributing solids in liquids on a semi-technical scale.



	Power	Width	Depth	Height	Disc spacing	Revolutions
<b>Black 300</b>	3,00 kW	1050 mm	700 mm	2100 mm	50-100 mm	0-3000 rpm
<b>Black 400EL (100-200 L)</b>	4,00 kW	1050 mm	700 mm	2400 mm	50-100 mm	0-3000 rpm
<b>Black 400PN (100-200 L)</b>	4,00 kW	1200 mm	1050 mm	2500-3000 mm	50-100 mm	0-3000 rpm

## Additional equipment:

- pneumatic lift
- vacuum attachment
- rotor stator
- basket mill
- ring mill
- analogue control
- electronic control
- EX-EI version



# Dissolver BLACK II

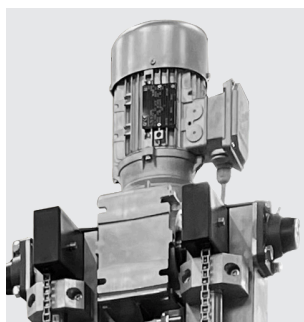
The BLACK II laboratory dissolver is an effective device for dispersing, mixing, dissolving and distributing solids in liquids on a semi-technical scale.



	Power	Width	Depth	Height	Disc spacing	Revolutions
<b>Black 550</b>	5.50 kW	1200 mm	1050 mm	3000 mm	50- 150 mm	0-3000 rpm

### Additional equipment:

- pneumatic / electric lift
- vacuum attachment
- rotor stator
- basket mill
- ring mill
- analogue control
- electronic control
- EX-EI version





# Mixer ROLL

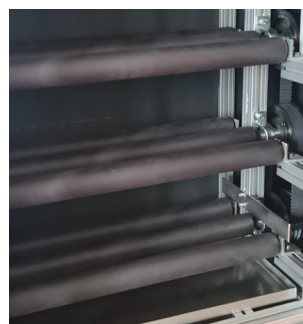
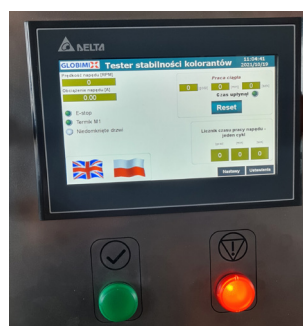
The mixer is used to check how the periodic mixing process affects the durability of the samples, checking whether the tested samples do not delaminate.

The device simulates the aging process of pigments used in paint mixing plants. It verifies whether the long-term mixing process changes the viscosity of the tested samples.



## Technical specification:

- Dimensions: height 1400 mm, width 1000 mm.
- Working dimensions: width 630 mm, depth 260 mm, total depth 460 mm.
- Rollers spacing 100 mm, rollers working length 600 mm.
- Structure made of aluminum.
- Four rotating shelves with variable direction of rotation and adjustment in the range 0-150 rpm.
- 0.55 kW engine
- Removable drip tray to prevent leakage of damaged samples.
- The drive unit and the working space lined with an acoustic mat eliminating excessive noise.
- Lockable doors.
- Work time programmer - daily, weekly (switching on and off at specified times, working for a specified time).
- Standard version without ATEX.
- 7" touch screen.
- Safety switch and limit switch (prevents work with open work space).



## Attachment types:



dispersing attachment



attachment basket mill



attachment rotor stator



vacuum attachment



ring grinding attachment

## Analogue control



## Digital control



## Electric lift



## Pneumatic lift





1



2



3



4



1



2



3



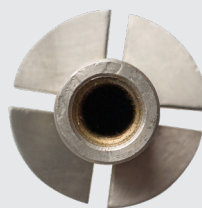
4



5



2



7



8



5



6



7



8



9



10



11



9



10



11